

AMERICAN MUSEUM IN BRITAIN

Presents an

English Excursion

In Commemoration of the 300th birthday of

Lancelot “Capability” Brown

September 29 – October 9, 2016



This excursion through the English countryside with visits to some of the Great Houses and Gardens of England coincides with the 300th birthday of perhaps the most famous and influential landscape architect in the history of Great Britain.

The trip starts with a night at the Ritz in London; we will wend our way to Shropshire by visiting Rousham and Compton Verney along the way. Rousham is the home of William Kent's spectacular Arcadian garden; Compton Verney is a museum with a 'Capability' landscape that has recently been restored.



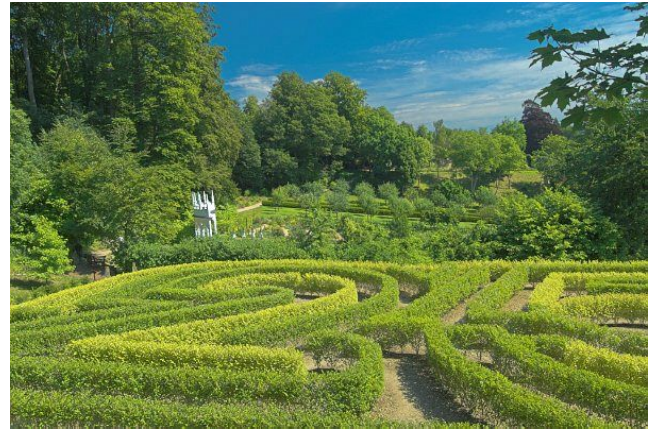
Ritz Hotel

In Shropshire we will stay at beautiful Weston Park, complete with lovely views, another 'Capability' landscape, and our butlers. Those of you who travelled with us to Weston Park two years ago know just what a treat our four-day stay there will be. We will visit seven important properties nearby not visited during our last stay, guided by Gareth Williams, the masterly curator at Weston.

We then travel towards Bath, visiting Brown's work at Croome Court and the Rococo garden at Painswick. We will stay at the luxurious new 5-star Gainsborough Hotel in the centre of Bath, just a few blocks from Museum Director Dr. Richard Wendorf's flat.

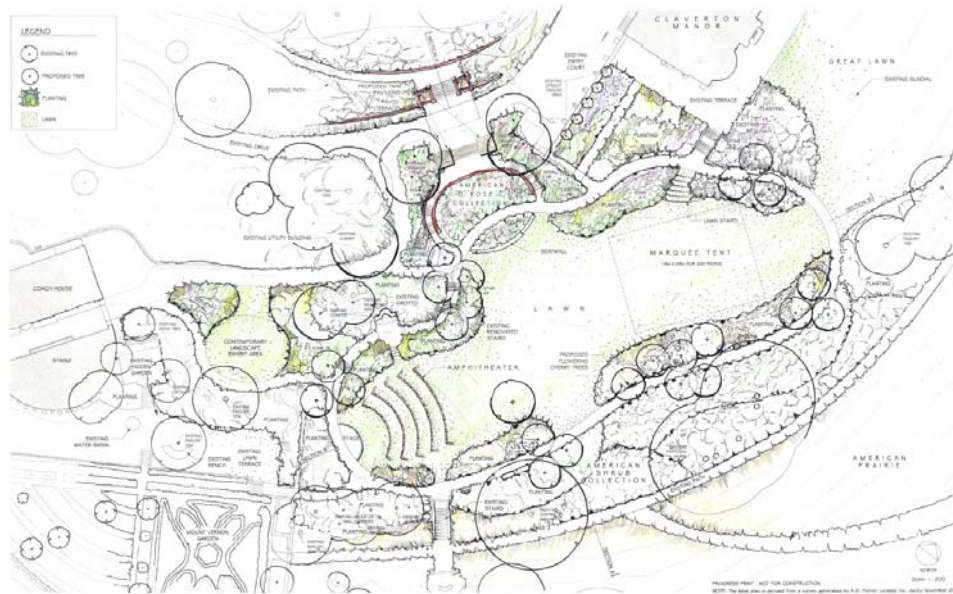


Croome Court



Rococo Garden

While based in Bath we will visit the ‘Capability’ landscape at Prior Park in the city and then have lunch at the American Museum, where we will have an afternoon to spend in the major exhibition and the gardens. Museum Director Richard Wendorf, The new Head Gardener, Andrew Cannell, and Eric Groft, Landscape Architect will give everyone a tour of the area soon to be devoted to the New American Garden designed by Oehme, van Sweden & Associates, based on Jefferson’s winding way at Monticello., featuring sweeps of American perennials and ornamental grasses.



The New American Garden at the American Museum in Britain

We will also visit Cothay, Hestercombe, and Sherborne Castle (which has a Capability Brown exhibition on display) and celebrate the end of our excursions with a festive dinner in the Elizabethan house of some long-time supporters of the Museum.

This will be a marvellous opportunity to see a wide variety of English gardens and the stately homes they surround, so please mark your calendars.



WESTON PARK

About Weston Park:

Boasting a unique heritage this beautiful 17th century stately home set amidst 1,000 acres of parkland may have an ancient past, but its dynamic outlook makes it a perfect choice for our house party. Although it is still very much a stately home it is professionally operated as any 5-star country house hotel would be.

Weston has 28 bedrooms, is fully staffed with a team of butlers, chefs and housekeepers so that your every need is taken care of. All the bedrooms are individually designed. It was built by the Earls of Bradford to entertain in style with exquisite food to match, a tradition that is upheld today.

Dining at Weston can take place in either the historic Dining Room surrounded by the cream of the collection including works by Van Dyck and Lely, the Victorian Orangery with its views over the Italian Gardens or the Salons providing an intimate setting.

All the bedrooms are individually designed and provide a genuine luxurious appeal and character that one would expect from a 17th century stately home with collections of family furniture and heirlooms you will not find in any hotel.

About your Study Leader: Gareth Williams

Gareth holds degrees of BA (Hons.) and MA, both in the History of Art from the University of Manchester. He has 20 years experience of involvement with historic houses as a researcher and architectural historian and through professional work within the auction world.

From 1992 until 2003 Gareth was furniture and works of art specialist for Phillips and for Sotheby's – the latter five years of this period being Sotheby's regional director based at Chester.

From January 2004 to June 2006, Gareth worked with the National Trust at Nostell Priory in West Yorkshire, with curatorial and conservation responsibility for the highly important contents of the house, a part of which constitutes the most important collection of furniture and decorations by Thomas Chippendale to remain in their indigenous setting. In June 2006, Gareth was appointed Curator to the Weston Park Foundation.

If interested, please contact Susan Gullia at Protravel.

TRAVEL ARRANGEMENTS BY:



SUSAN GULLIA, PROTRAVEL INTERNATIONAL

515 MADISON AVENUE

NEW YORK, NY 10022

PHONE: (212) 409-9555 or (800) 227-1059 ext. 455

FAX: (212) 755-1376

EMAIL: sgullia@protravelinc.com

HALCYON FOUNDATION

FRIENDS OF THE AMERICAN MUSEUM IN BRITAIN

555 FIFTH AVENUE, 17TH FLOOR

NEW YORK, NY 10017

PHONE: (212) 370-0198

